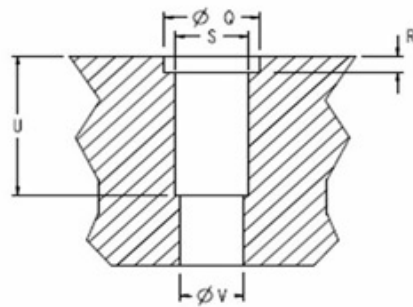
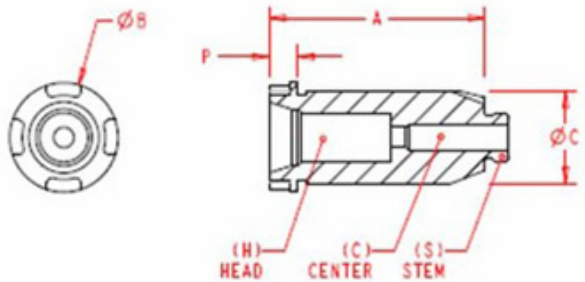
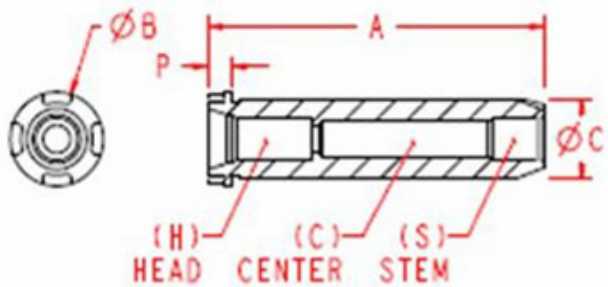


Fitting	Part #	Fredsert Data					Installation Data											
		A	B	C	H	(C)	(S)	P	Q	R	S	T	U	V				
	Part Code	ID Thread	Overall Length (mm)	Head Dia (mm)	Head Internal Spec	Center Internal Spec	Stem Internal Spec	Head Thickness (mm)	Min C' bore Dia (mm)	Min C' bore Depth (mm)	Class 6H Thread in Parent Material	Min Drill Depth (mm)	Min Thread Depth (mm)	Tap Drill Diameter (mm)	Drive Tool	Combo Tool	Install Torque (ft-lbs)	
	GAFMRT-H1C1S1-2730-62T	170	63.35	31.75	M27 x 3.0	H1	C1	S1	8.35	32.50	4.75	M27 x 3.0	57.50	55.00	24.00	D-20	C41	700
	GAFMRT-H1C2S2-2730-107T	301	110.35	31.75	M27 x 3.0	H1	C1	S1	8.35	32.50	4.75	M27 x 3.0	104.50	102.00	24.00	D-20	C44	700
	GAFMRT-H1C0S1-2730-55T	300	80.35	31.75	M27 x 3.0	H1	C1	S1	8.35	32.50	4.75	M27 x 3.0	74.50	72.00	24.00	D-20	C42	700



-Used where a hydraulic fitting passes through a wall

-Fredsert creates a seal on external threads without Loctite

-Designed for strength & durability

-Precision ID/OD thread concentricity

-Titanium option provides 40% weight savings over Stainless