

Male

Fredsert Data

Installation Data

Part #

Part Code

A	B	C	D	P	Q	R	S	T	U	V			
ID Thread	Minimum Effective ID Thread Depth (mm)	Overall Length (mm)	Head Dia (mm)	Head Thickness (mm)	Min C' bore Dia (mm)	Min C' bore Depth (mm)	Class 6H Thread in Parent Material	Min Drill Depth (mm)	Min Thread Depth (mm)	Tap Drill Diameter (mm)	Drive Tool	Combo Tool	Install Torque (ft-lbs)

GASMRT610-1015-9C-15

86

M6 x 1.0

25

49

13

15

N/A

N/A

M10 x 1.5

11.5

9

8.5

13mm Hex

C5

60

GASMRT610-1015-9C-20

88

M6 x 1.0

25

54

13

20

N/A

N/A

M10 x 1.5

11.5

9

8.5

13mm Hex

C5

60

GASMRT610-1015-9C-13

85

M6 x 1.0

25

47

13

13

N/A

N/A

M10 x 1.5

11.5

9

8.5

13mm Hex

C5

60

GASMRT610-1015-9C-60

89

M6 x 1.0

25

94

13

60

N/A

N/A

M10 x 1.5

11.5

9

8.5

13mm Hex

C5

60

GASMRT12175-12175-17C

87

M12 x 1.75

26.50

50.00

15.00

6.00

N/A

N/A

M12 x 1.75

20.00

17.50

10.20

15mm Hex

C9

110

GASMRT2025-2025-22C

137

M20 x 2.5

26.50

48.00

30.00

6.00

N/A

N/A

M20 x 2.5

18.00

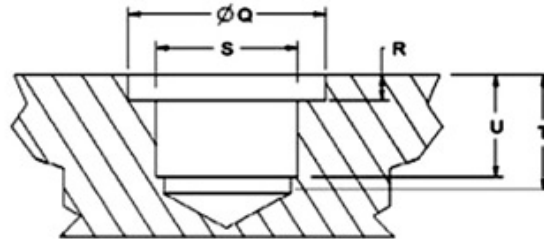
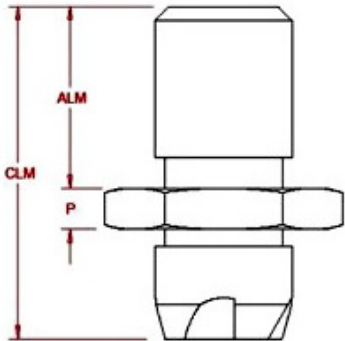
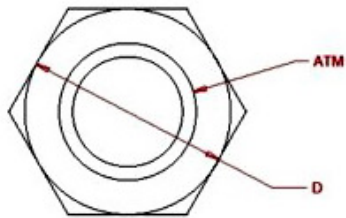
15.50

17.50

30mm Hex

C27

350



-Used where an externally-threaded Boss is needed

-Designed for strength & durability

-Precision ID/OD thread concentricity

-Titanium option provides 40% weight savings over Stainless